



Concentrated Enzyme Ultrasonic Cleaner

Use as an ultrasonic cleaning solution, instrument presoak and/or linen presoak

FRESH TANGERINE PEEL SCENT

- Efficiently removes blood, proteins, carbohydrates and lipids from dental & surgical instruments
- Quickly dissolves organic matter
- Bacteriostatic = prevents bacterial growth
- Low foaming | Free rinsing
- Cost effective
- Instrument friendly

1 L
GZYX3-M



= 3X + 3X
enzymes surfactants

Great Value	Super Concentrated, Super Economical
	1L bottle of Gzyme ³ = 400L Working Solution
Convenient	Takes up little storage space. 1 Bottle to recycle vs 400 bottles.
	Easy to use Squeeze & Measure packaging = less mess, no spills, no waste.
Instrument Friendly	Neutral pH, non-corrosive formula is compatible with most metals, plastics and rubbers
	Protects soaking instruments from staining, rusting & binding of hinges.

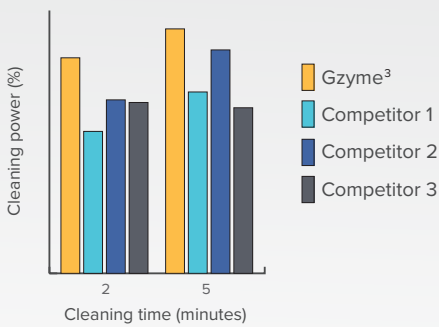


Concentrated Enzyme Ultrasonic Cleaner

GZYME³ WITH ENZYME BOOST

Enzymes enhance detergent cleaning by breaking down large, hard to remove materials into smaller, easy to remove fragments. This enhances overall cleaning performance. With the large stuff out of the way, the surfactants can do their job. Gzyme³ with its multiple enzymes and surfactants is designed for superior performance in the presence of high organic debris and in areas that are hard to reach mechanically.

GZYME³ CLEANING EFFICACY - Tested with serrated scissors



Gzyme³ shows a superior clean, in the shortest time, with the hardest to clean instrument.



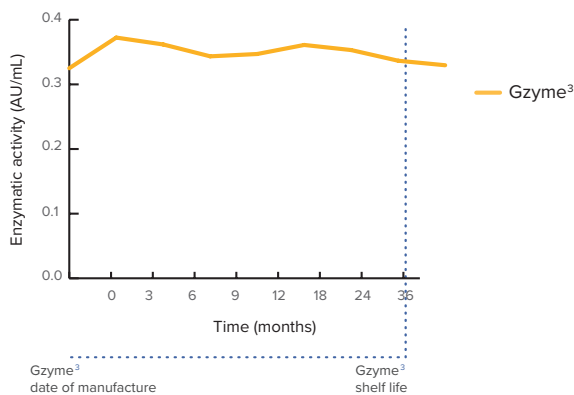
*Germiphene Corporation Comparison Study for Enzymatic Cleaners September 2006

GZYME³ ENZYMATIC STABILITY

Chart 1: Gzyme³'s enzymatic stability indicative of a 3 years shelf-life is based on legacy historical stability data. Gzyme³ shows a stable high enzymatic activity throughout product's life cycle.

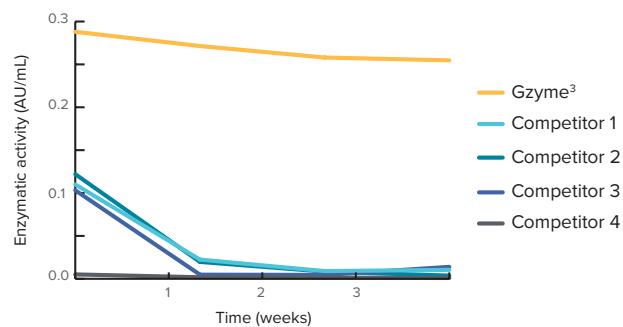
Chart 2: Stress Test at 55°C. The temperature (55°C) and length of the study (3 weeks) is equivalent to 3 years at room temperature. All enzymatic competitors dropped significantly in enzymatic activity after the first week of testing. Gzyme³'s enzymatic activity is strong and stable, significantly higher than the competition, even in extreme situations.

Chart 1 *



*Test data available upon request.

Chart 2 *



*Germiphene Corporation Comparison Study for Enzymatic Cleaners September 2006

To order Gzyme³ or for more information, contact your Account Manager or Germiphene at 1.800.265.9931 info@germiphene.com | www.germiphene.com

REV 01 062024