

E₂O™ 2-in-1

Dental Waterline Treatment Maintenance & Shock

Specifically designed for use in independent water bottle systems.

- Biofilm and bacteria control
- No harsh chemicals
- Odourless, colourless, tasteless, pH neutral
- Non-foaming, consistent results every time
- Tested on various waterline tubing with no negative effects or corrosion
- One E₂O™ bottle lasts approximately 4–6 months per dental chair

- Eco-friendly solution, E₂O™ breaks down into water and oxygen
- Non-toxic to equipment or patients

- No waiting for tablets to dissolve, no residue/clogging from undissolved tablets
- No patient complaints about bad taste or grit from tablet residue



INTERESTED IN WATERLINE TESTING?

We **LOVE** to educate! Learn about dental waterlines – the challenges and solutions. Visit germiphene.com for our complimentary on demand webinars or book an office session with your rep today.

E2O 236mL.....E2O-S



TAKE CHARGE of your office water today.
Easy dose pump. No measuring, no mess.

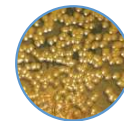
REGULAR TREATMENT



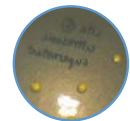
SHOCK TREATMENT



Water sample taken from an ultrasonic scaler



Before E₂O™



After E₂O™

Tests performed showed a significant reduction of bacteria in water sources after the use of E₂O™.

SAFE to use:

A whitening strip, directly placed in your mouth, contains **500X more** hydrogen peroxide than E₂O™ in your waterlines!*

*Based on using the daily treatment dosage of E₂O™ in your waterline unit.

To order E₂O™ or for more information, contact your District Manager/IPAC Specialist or Germiphene at 1.800.265.9931 | info@germiphene.com | www.germiphene.com

Which testing is best for your office?

Introducing our new online waterline app

GET MORE WITH E | LINE™

Schedule waterline tests + record results with ease and accuracy.



Ask us how to get started today!



Water Quality Check Kit



2 Test vials:

-  Total Bacteria + Fungi
Test detection limit 200 cfu/mL
-  *E. coli + faecal coliform*
Test detection limit 1 cfu/mL

IN HOUSE TESTING

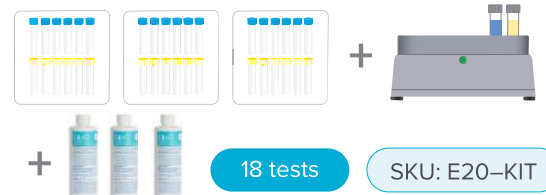


RESULTS
in 24 hours
using a 37° C
Dry Block Incubator

Easy to read,
colour coded results



E|Line™ Complete Control *Complete control, all in one box*



18 tests

SKU: E20-KIT

E|Line™ Water Quality Check Kit



18 tests

SKU: ELINE-W-KIT

E|Line™ Water Quality Check



12 tests

SKU: ELINE-VX2

To order E2O™ or for more information, contact your District Manager/IPAC Specialist or Germiphene at 1.800.265.9931 | info@germiphene.com | www.germiphene.com